

Proudly made in the USA

Suspension MAXX

INSTALLATION INSTRUCTIONS

Part # **SMX-T50, SMX-10100, SMX-10125, SMX-250XL**

For use with:

'02-Up Chevrolet Trailblazer (XL & SS), '02-Up GMC Envoy

'02-Up Buick Renier & '02 Oldsmobile Bravada



Thank You for choosing SuspensionMAXX for your vehicle. This kit is designed to add suspension travel and increase front ground clearance. Specially designed tools and experience are required to complete the installation properly. These parts should only be installed by a Qualified Mechanic otherwise an unsafe vehicle and/ or personal injury may result. Consult manufactures service manual for proper torque specifications and procedures. Instructions are supplied for the leveling kit installation only. Safety is most important. Use safe working habits.

Notice:

SMX-T50 Lifts approximately 0.75 inches of chassis height.

SMX-10100 Lifts approximately 1.5 inches of additional chassis height.

SMX-10125 Lifts approximately 1.7 inches of additional chassis height.

SMX-250XL Lifts approximately 2.5 inches of additional chassis height.

WARNING! This suspension system will enhance off road performance and increase ground clearance! **Larger** tires will increase vehicle roll center height. The vehicle will handle and respond to driver steering and braking differently from a stock factory equipped passenger car or truck. Extreme care must be used to prevent loss of control or vehicle rollover during abrupt maneuvers both on and off-road. Failure to operate this vehicle safely can result in vehicle damage, serious injury or death to the driver and passengers. **Always wear** your seat belts and **reduce** your speed, **avoid** sharp turns, **inclines** and **abrupt** maneuvers. Tread lightly, respect nature and enjoy the Off-Road Experience!

Help keep it available for future generations.

Thank You! Suspension MAXX Inc.

Lift Your **Attitude!**
Retain your factory ride



Again, thank you for your purchase! Enjoy your SuspensionMAXX leveling system!

Questions? E-mail us at tech@suspensionmaxx.com or call 1.888.MAXX.CAM



Proudly made in the USA

Suspension MAXX

Lift Your
Attitude!
Retain your factory ride

1

Tools required for installation:

1. Safety Glasses and Related Safety Equipment
2. Load-rated safety stands, floor jack, and wheel chocks
3. Metric/ American tool socket set / wrench set/ torque wrench
4. Loctite Threadlocker for fasteners
5. Medium size pry bar/ Brass drift/ Hammer
6. Strut Spring Compressor

(This can be subletted to a qualified part store or automotive repair facility)

Installation Procedure

CAUTION: Do not remove center strut rod nut until spring is safely compressed using the properly designed tools

1. Measure and record chassis height from center of front wheel hub to outer fender edge. Chassis measurement (with spacer) should not exceed 21".
2. Raise and safely support the vehicle under the specified frame contact points.
3. Mark wheel lug position & remove front wheels to gain access to front suspension.
4. Remove upper strut mount retaining nuts. (Fig 1.1)

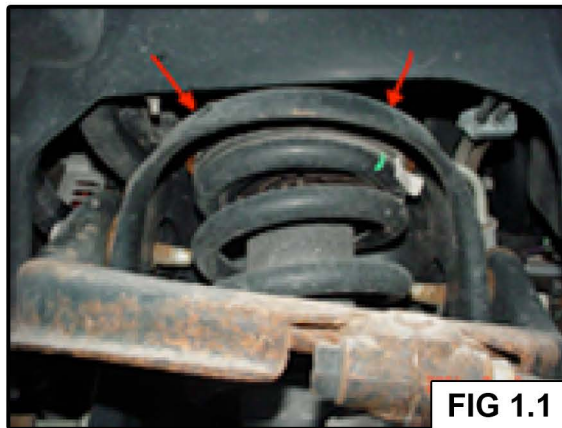


FIG 1.1



Again, thank you for your purchase! Enjoy your SuspensionMAXX leveling system!

Questions? E-mail us at tech@suspensionmaxx.com | or call 1.888.MAXX.CAM

5. Remove lower strut nut at lower control arm and separate strut to lower control arm taper. (Fig 2.1)

6. Remove strut body, spring and upper mount as one assembly.

Note: Use care when removing strut to avoid damaging drive axle boots.

If installing SMX-T50, install strut mount extender as shown and proceed to **Step 13** for assembly.

DO NOT remove center strut rod nut.

For all parts besides SMX-T50, follow the installation instructions below:

CAUTION: DO NOT remove center strut rod nut until spring is safely compressed using the properly designed tools.

7. Mark exact orientation of upper strut mounting studs prior to removal of strut-mount. (Fig 2.2)

Note: Spring is under extreme tension and correct tools and procedures must be used.

8. Once spring is safely compressed and secured, the center strut nut can be removed.

CAUTION: DO NOT allow the strut shaft to rotate excessively.

9. Remove upper strut mount and separate spring insulator / guide from upper spring mount.

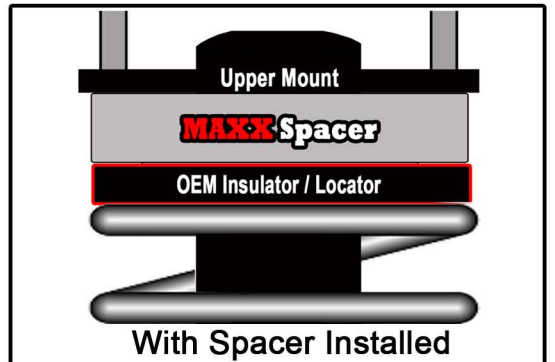
Note: Spring insulator/guide may be frozen on upper mount.



FIG 2.1



With Strut Mount Extender Installed



With Spacer Installed

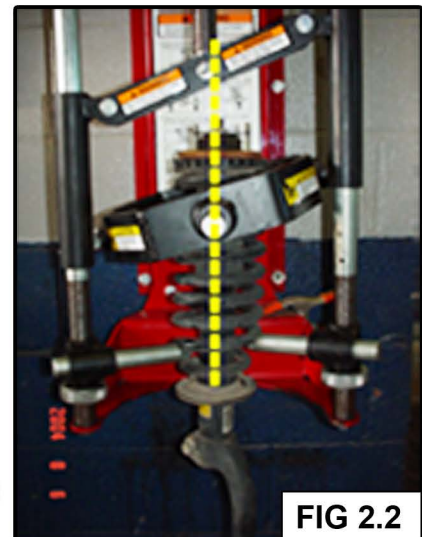


FIG 2.2



Again, thank you for your purchase! Enjoy your SuspensionMAXX leveling system!

Questions? E-mail us at tech@suspensionmaxx.com | or call 1.888.MAXX.CAM

Kit Identification

IMPORTANT: Lower jounce washer needs to be replaced with supplied **gold washer** to allow clearance for **MAXX Spacer**



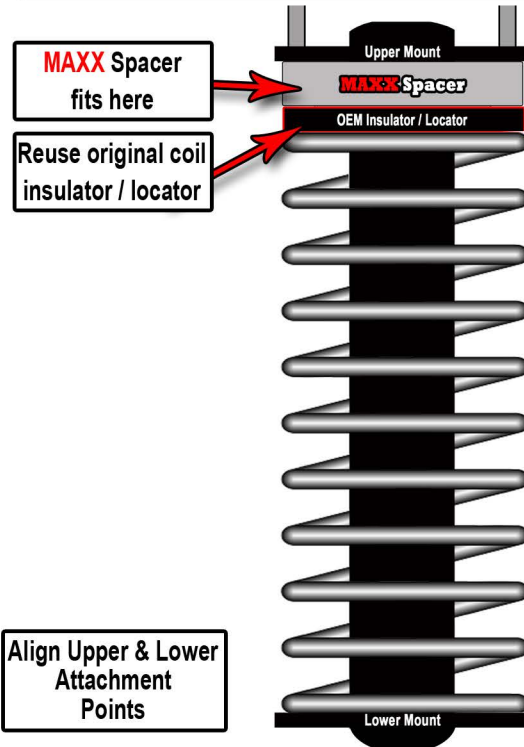
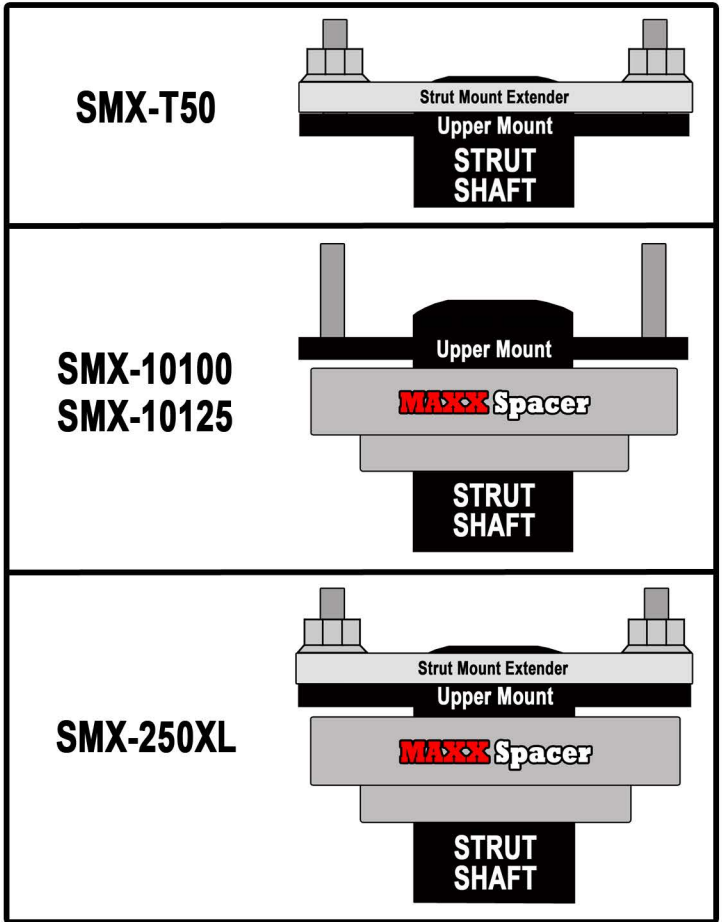
IMPORTANT: Do not forget supplied **gold washer**.

10. Install MAXX Spacer between upper mount and insulator guide.
11. Reinstall upper mount, MAXX Spacer, and original spring insulator / guide onto strut shaft

Note: Spring may require additional compression to thread nut on strut rod due to spacer being installed.

12. Rotate upper strut mount to align with reference.
13. Reinstall strut as removed from vehicle. Use supplied nuts.

Note: Wheel alignment is recommended, align front wheels to manufacture's specifications



Wheel Alignment Specs w/ Leveling Kit	
Camber...	0.0 Deg. +/- 0.5 Deg.
Caster.....	2.0 Deg. +/- 1.0 Deg.
Toe.....	1/8" +/- 1/16" (toe in)



Again, thank you for your purchase! Enjoy your SuspensionMAXX leveling system!

Questions? E-mail us at tech@suspensionmaxx.com | or call 1.888.MAXX.CAM