



**RUST  
BUSTER**  
FRAME REPAIR

**RB4021R**

**Jeep® TJ Wrangler  
Rear Upper Control Arm Mount Bracket**



**REQUIRED TOOLS**

Jack Stands or Lift  
Mig Welder  
Paint/Primer  
Locking Pliers  
Hand Grinder  
Cutting Wheel or Torch  
Welding Gloves  
Welding Hood/Shield  
Ear & Eye Protection  
Sockets & Ratchet  
Fire Extinguisher & Water

**KIT CONTAINS**

Rear Upper Control Arm Mount Bracket  
M20x75mm Bolt

**QTY**

1  
1



**RUST  
BUSTER**  
FRAME REPAIR

**RB4021R**

**Jeep® TJ Wrangler  
Rear Upper Control Arm Mount Bracket**

**1) PREPARING YOUR VEHICLE**

Begin by disconnecting your battery prior to starting your installation.

Inspect your vehicle for leaking fuel lines, fuel tank and engine components. If you have fuel leaks repair all leaks prior to starting your installation. If your fuel tank is near your welding area **remove your tank prior to welding.**

Remove all combustible items above the work area such as seats, carpets, padding, etc.

**Keep all flammable materials away from the vehicle work area.**

**2) PREPARING YOUR WORKSTATION**

Keep a fire extinguisher and water close by in the case of fire and make sure you always have a designated "Fire Watch" to assist during the cutting or welding phases.

Abide by all apprenticed welding safety standards and practices.

Always use appropriate welding eye protection, ear protection, and work and fire safety gloves during the installation and within the work area.



**WARNING!**

If you are unsure on how to perform the installation or how to operate any of the required tools listed above, it is **HIGHLY** advised that you enlist the work of a certified welder/installer.

Failure to follow proper safety precautions and instructions may result in serious injury. **The user assumes all liability when installing the product.**



**RUST  
BUSTER**  
FRAME REPAIR

**RB4021R**

**Jeep® TJ Wrangler  
Rear Upper Control Arm Mount Bracket**

**3) PREPARING FOR YOUR INSTALL**

Lift your vehicle.

Remove the tires and wheels and set them out of the way.

Support your axles using jack stands for the driver and passenger sides.

Drop and remove the gas tank and all cords and tubes associated with it, and plug/cover the remaining tubes to prevent fume leakage. Place it safely outside of your workstation as it poses as a fire hazard during installation.

Using a 15mm socket, remove the upper control arm bolt from the frame side bracket.

Once the upper control arm bolt is removed rotate the control down and out of the way.

Depending on how you intend to cut, clean the cut zones free of rust and down to bare metal.

**4) CUT**

We recommend marking the orientation of the control arm mount bracket to help position the new bracket easier.



Begin cutting away the upper control arm mount bracket as close to the frame rails as possible.



**5) TEST FIT PART**

Hold the new bracket up to the frame rail in line with orientation lines previously marked.

**NOTE:** If other frame repair components have been installed previously, additional modifications to the frame may be required.

**6) WELDING PREP**

Once the part has been fitted, prepare your weld zones by clearing away any rust or debris, revealing bare metal.





**RUST  
BUSTER**  
FRAME REPAIR

**RB4021R**

**Jeep® TJ Wrangler  
Rear Upper Control Arm Mount Bracket**

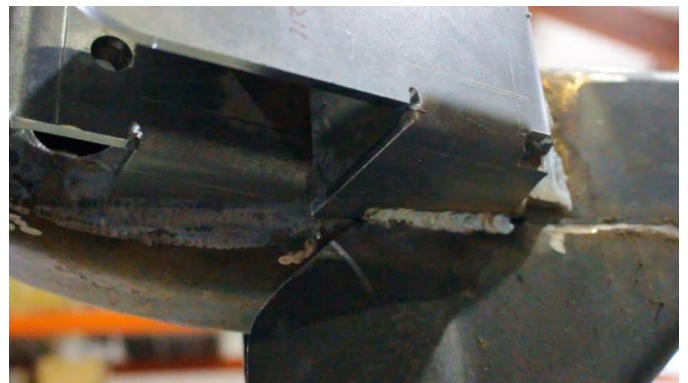


(OPTIONAL): Coat the part with a weld-able primer or other rust inhibitor to help prevent or reduce the risk of rust formation.

Tack weld bracket into place and test fit control arm into bracket to make sure the position of the bracket is correct before continuing.



100% weld around all edges.



**7) WELD**

Remove any remaining potential fire hazards on both the vehicle and surrounding area. Following proper welding procedures, begin welding the part onto the frame rails.



**RUST  
BUSTER**  
FRAME REPAIR

**RB4021R**

**Jeep® TJ Wrangler  
Rear Upper Control Arm Mount Bracket**

**8) PAINT AND PROTECT**

If you chose not to protect your part in (Step 6), coat the part and work area with a primer or other rust inhibitor to help prevent or reduce the risk of rust formation.



**9) REASSEMBLE VEHICLE**

Begin reassembling your vehicle by starting with reinstalling the upper control arm into the new bracket with a 15mm socket and ratchet.

Reinstall your gas tank, cords, and tubes.

Reinstall your tires and wheels.

Reconnect your battery.