



**“Master Your Terrain”**

**(307) – 775 – 9565**

**[www.tntcustoms.com](http://www.tntcustoms.com)**

## **Heavy Duty Track Bar System Jeep TJ/LJ**

### **Installation Instructions**

Congratulations for purchasing a TNT Heavy Duty Track Bar System for your Jeep Wrangler. Begin by unpacking your kit and comparing the contents to the packing list provided as attachment “A” to this manual. Please observe proper shop safety procedures when performing this install. Use proper eye and hearing protection as required and use safe jack stands/supports, placed appropriately for supporting the vehicle while you work on it. Cutting and minor welding are required for the installation of this kit. TNT suggests that these operations be performed only by a qualified shop or individual.

### **STEP 1: Prep**

Begin by properly supporting your Jeep to facilitate the removal of the tires and factory track bar and frame side trackbar mount.

### **STEP 2: Track Bar Removal**

Once the tires have been removed from the vehicle proceed with unbolting the factory track bar from the axle and frame bracket.

### **STEP3: Track Bar Bracket Removal**

Using proper eye, hearing and skin protection remove the factory track bar bracket from the frame. Once removed, grind the frame surface clean in preparation for TNT HD track bar bracket installation.

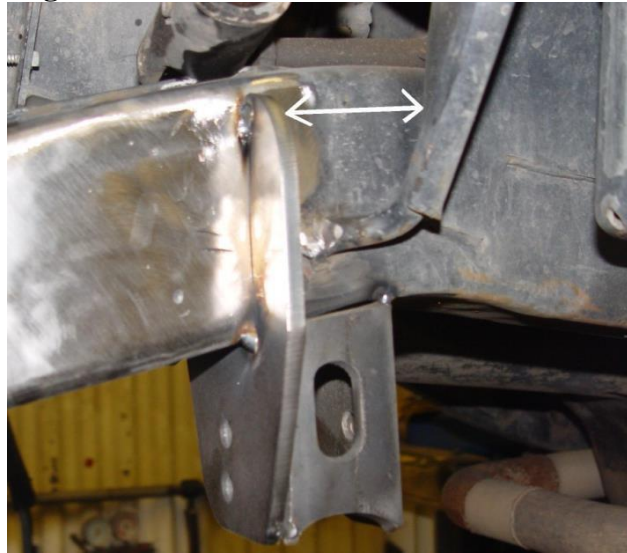
*(Note: If using a torch, steel cuts faster than cast metal so be careful not to damage the frame rail)*

### **STEP 4: Install of TNT HD Track Bar Bracket**

Using a tape measure, measure 2-3/4” from the inside of the coil tower towards the front of the vehicle and make a mark. This is the location of the inside edge of the track bar bracket. Install track bar bracket and tack weld into place. Double check track bar bracket placement, if correct weld bracket into place. (See figure 1) *\*\*Customers making wheelbase changes may need to adjust bracket placement accordingly.*

*(Note: If front axle placement has been moved forward relocate bracket on frame accordingly)*

**Fig. 1**



**STEP 5: Install Trackbar**

Install the flex joint end of your TNT Heavy Duty Track Bar into the TNT Heavy Duty Bracket using the supplied 12mm bolt, nut and washers. Adjust the axle end of your new track bar until it lines up with the factory mount then install using supplied 10mm bolt, nut and washers. TNT Over-the-knuckle or TNT Hyster mount will use a 12mm bolt for this step. Grease track bar flex joint(s) and reinstall tires.

**STEP 6: Final Adjustment**

Once the vehicle is back on tires adjust trackbar until axle is centered.

**Appendix A**

**Kit Components:**

- 1 – Heavy Duty Track Bar
- 1 – Heavy Duty frame bracket

*\*\*OTK & Hyster track bars ship with flex joints on both ends*

**Hardware:**

Factory Setup:

- 1 – 12mm bolt, 1- 12mm nut, 2- 12mm washers
- 1 – 10mm bolt, 1- 10mm nut, 2- 10mm washers

OTK/Hyster:

- 2 – 12mm bolts, 2- 12mm nuts, 4- 12mm washers