



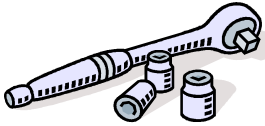


[www.HylineOffroad.com](http://www.HylineOffroad.com)

1507C West Park Avenue • Perkasio, PA 18944  
 Tel: 215/257-4323 • Fax: 215/257-4364 • 888-HYLINE 1 (888/495-4631)

## **Proudly Made In USA**

**Installation Instructions:**  
 JK Tube Step Rocker Panel  
 Part Number: **400.300.100**

**Vehicle Fitment:**  
 2007-Present Jeep Wrangler  
 4-Door Only

Parts List	Tools Needed		
<p>Qty:</p> <ul style="list-style-type: none"> <li>1 Driver Rock Slider – RED Dot</li> <li>1 Passenger Rock Slider – GREEN Dot</li> <li>1 Driver Drill Template – RED Dot</li> <li>1 Passenger Drill Template – GREEN Dot</li> <li>2 M12 Bolts</li> <li>2 M12 Flat Washers</li> <li>2 M12 Lock Washers</li> <li>12 3/8-16 Gr 5 Hex Nuts</li> <li>12 3/8" USS Flat Washers Gr 5</li> <li>12 3/8" Split Lock Washers Gr 5</li> <li>6 3/8-16 Threaded U-Bolts</li> <li>1 7/16-20 Hex Head Bolt Gr. 5 with Flat &amp; Lock Washer</li> <li>4 Square Plastic End Caps</li> <li>12 3/8" Retaining Rings</li> </ul>	 <p>Ratchet &amp; Sockets            5/8", 9/16" 18mm &amp;            19mm</p>	 <p>Drill            3/16", 1/2" &amp; 25/64"            Multi-Depth or Step            Drill Bit Preferred            Hand Tap &amp; 7/16"-20            Tap</p>	 <p>Safety Glasses</p>

Congratulations on your purchase of the Hyline Offroad Tube Step Rocker Panels. All of our products are completely manufactured in our facility located in Perkasio, PA. They are designed and engineered by Offroad enthusiasts just like you to be rock solid. Hyline Offroad would like to thank you for your recent purchase and look forward to serving you in the future.

**Hyline Offroad Staff**

1. Remove any stock rock rails or factory tube steps from vehicle if equipped.

Note: You will also need to remove the factory Rubicon Rails if vehicle is equipped with them.

### Passenger Side Installation:

2. Remove the two existing bolts from underside of frame rail. This should drop the gas tank and transmission skid plate just enough to slide the Passenger Side steel drill template in place. The Passenger Side Template will have a GREEN Dot located on it.

3. Insert the Passenger Side steel drill template between skid plates and the frame rail. Hold up the template and install one of the supplied M12 bolts and flat washer into the forward most hole. Then re-install the other two bolts you just previously removed.

NOTE: There is a small flange formed into the template because the bottom frame rail is not level, so the small flange is there to keep the holes your going to drill level. When re-installing two stock bolts make sure you only tighten them so that the small formed flange on the template just makes contact with the bottom of frame rail.

DO NOT OVERTIGHTEN AND FLATTEN THE TEMPLATE FLANGE. (Figure 1)



Figure 1, Template Shown is For 2 Door

4. You can now drill the 6 holes in the side of the frame through the template using a 3/16" Drill Bit. Using a smaller drill bit will help with accuracy before drilling the final size 1/2" hole size.
5. After all 6 holes are pre-drilled you can remove the template. Then redrill all 6 holes open to 1/2". A Multi-Depth or Step Drill Bit is nicer for this operation because it's shorter and will cut through the metal quicker and easier.
6. Before you install the Rock Slider onto your Jeep you may need to loosen more of the bolts on the gas tank and transmission skid plate in order to fit the Rock Slider Brackets in between the skid plates mounts and frame rail. You'll need atleast a 1/4" gap or more to make fitting in the Rock Slider Brackets much easier.

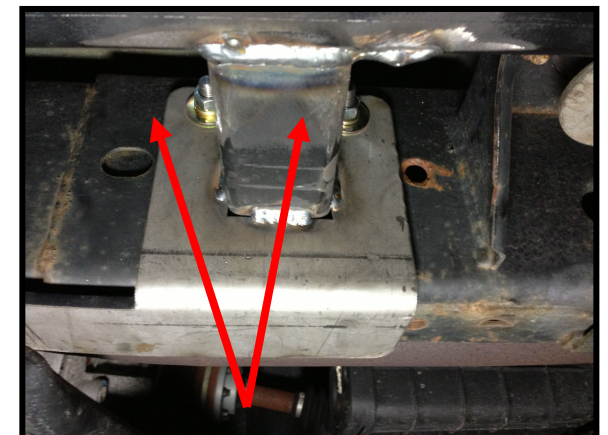
7. Now install the supplied 3/8-16 Threaded U-Bolts by inserting one end first, then feeding and turning the U-Bolt until you fish it out the other hole. Do this before installing the Rock Sliders. Press on the provided Retaining Rings immediately after the U-Bolt is installed to prevent from slipping into frame. (Figure 2)
8. Now you're ready to install the Rock Slider (Much easier with two people). Slide the Rock Slider Brackets between the skid plate mounts and frame rail and install the two stock bolts into the bottom. Also install the supplied M12 bolt with lock washer & flat washer in forward most hole. DO NOT TIGHTEN YET.
9. Fasten the 3/8-16 Hex Nuts onto U-Bolts with flat washers and lock washers. Do Not Overtighten These Nuts.
10. Tighten all other bolts on the bottom of the frame.
11. The installation of the Passenger Side Rock Slider is now complete.



**Figure 2, U-Bolt Shown without Rock Slider For Clarity. Install with Rock Slider In Place**

**Driver Side Installation:**

12. Remove the existing bolt from underside of frame rail. This bolt will be in the center of the frame rail.
13. Insert the Driver Side steel drill template (RED Dot) between skid plate crossmember and the frame rail. Hold up the template and install one of the supplied M12 bolt and flat washer into the forward most hole. Then re-install the other bolt you previously removed. The Driver Side does not have an existing hole for the rear most location. There is a hole in the template where you'll need to drill.



**Figure 3 – U-Bolts Installed & Fastened**

14. Drill the hole in the bottom frame rail through the template using the 3/16” bit. Then use the 25/64” bit to drill the final size hole. It’s important to use this exact size 25/64” bit for the tapped hole. Tap the hole using 7/16”-20 hand tap.
15. After this hole is tapped clean out the threads and prep for installation of Rock Slider.
16. Repeat and follow steps 4-10 for installation on the Driver Side.
17. Install Black Plastic Tube Caps in each end of Rock Slider tube.
18. You’re installation is now complete.



**Send your Photos to [pics@HylineOffroad.com](mailto:pics@HylineOffroad.com) . If we choose any one of your pictures to be used on our website, We'll send you a FREE Hyline Offroad T-Shirt**