



[www.HylineOffroad.com](http://www.HylineOffroad.com)

1507C West Park Avenue • Perkasio, PA 18944  
 Tel: 215/257-4323 • Fax: 215/257-4364 • 888-HYLINE 1 (888/495-4631)

## Proudly Made In USA

**Installation Instructions:**  
 TJ/YJ Gen II Swingout Tire  
 Carrier

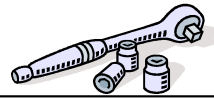
**Vehicle Fitment:**  
 1987-2006 Jeep Wrangler &  
 Unlimited

### Parts List

Qty:

- 1 Swingout Tire Carrier
- 1 Slide Adjustable Tire Mount
- 1 Black Tailgate Bracket Plate
- 1 Machined Pivot Pin
- 1 Short White Plastic Alignment Block
- 1 Long White Plastic Alignment Block
- 2 Brass Washers for Pivot Pin
- 5 1/2"-13 x 1-1/2 Gr. 8 Hex Head Bolts
- 5 1/2" Lock Washers Gr. 8
- 5 1/2" Flat Washers Gr. 8
- 2 5/16"-18 x 1-3/4" Gr. 5 Hex Head Bolts
- 4 5/16" Flat Washers Gr. 5
- 2 5/16"-18 Nylok Hex Nut Gr. 5
- 2 3/8" Flat Washers Gr. 5
- 2 3/8"-24 Nylok Hex Nut Gr. 5
- 1 3/8"-24 RH Thread Thin Hex Nut Gr. 5
- 1 3/8"-24 LH Thread Thin Hex Nut Gr. 5
- 1 Right Hand Thread Ball Joint Rod End
- 1 Left Hand Thread Ball Joint Rod End
- 1 1/8" PTF Stainless Steel Grease Fitting
- 1 Round Plastic Tube Plug
- 1 Aluminum Connector Rod
- 3 Wheel Studs
- 1 Black Rubber Stem Bumper

### Tools Needed



13mm Socket  
 3/4" Socket  
 1/2" Socket  
 9/16" Socket  
 Torx Bit



1/2" Wrench  
 3/4" Wrench  
 7/16" Wrench



5 lb. Hammer  
 Or Heavy Duty Vise



Grease Gun  
 Lithium Grease



Wire Cutters

Congratulations on your purchase of the Hyline Offroad Gen II Swingout Tire Carrier. Our Products are completely manufactured in our facility located in Perkasio, PA. They are designed and engineered by Offroad enthusiasts just like you to be rock solid at an affordable price. Hyline Offroad would like to thank you for your recent purchase and look forward to serving you in the future.

**Hyline Offroad Staff**

# PLEASE READ INSTRUCTIONS BEFORE BEGINNING INSTALLATION

## Generation II Swingout Tire Carrier Installation

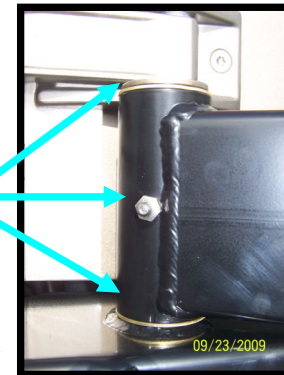
Step 1 – If you have not already installed your Hyline Offroad Rear Bumper that accepts this tire carrier please do so using the Installation Instructions for P/n 250.200.110.

**\*\*\*BEFORE INSTALLING TIRE CARRIER ON THE BUMPER COMPLETE STEPS 2 & 3\*\*\***

Step 2 – Remove the stock tire carrier housing by unbolting the four bolts using the ½” socket. Then remove the 3 black rubber mounts that the stock tire pressed against using the torx socket. Cut wire for third brake light as long as possible for rewiring if desired.

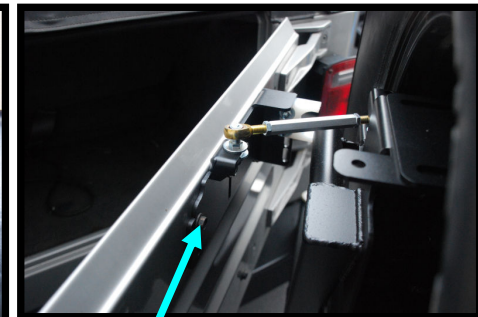
Step 3 – Install the Stainless Steel Grease Fitting using the 7/16” Wrench. The grease fitting has pipe threads which are tapered to obtain a leak free seal. Because of the tapered threads you may not be able to completely screw in the grease fitting. Note: Location of fitting might vary from picture in **Figure 1**.

Brass Washers  
& Grease Fitting



**Figure 1**

Step 4 – Install the supplied tailgate bracket using 3 bolts that were previously removed from stock tire carrier (Do Not Tighten Yet). Install Rod End Fitting using 3/8” flat washers & 3/8”-24 Locking Hex Nut & tighten. Also install the white plastic Alignment block using two-5/16-18” bolts, four-5/16” flat washers & two-5/16-18” hex lock nuts (Do Not Tighten Yet).  
**See Figure 2 – Photo May Vary By Model**



**Figure 2**

Tailgate Bracket

Note: Two Plastic Alignment Blocks have been provided. Use whichever block works best to align swingout carrier parallel to the tailgate. Typically all models will use the shorter block.

### \*\*\*INSTALL TIRE CARRIER ONTO BUMPER\*\*\*

Step 5 – Apply a thin layer of quality white lithium grease onto the entire shaft of the Pivot Pin before inserting into Tire Carrier. Insert the Pivot Pin through the Tire Carrier tube with the keyed end facing down. Make sure you have installed the Brass Washers properly. (Refer to Figure 3). With the Pivot Pin protruding through the Tire Carrier tube you can now slide the Pivot Pin down inside the bumper tube. The keyed notch on the Pivot Pin will slide into the cutout in the bottom of the bumper tube. Once you have the Pivot Pin seated properly you can now install the supplied ½”-13 Gr 8 Hex Head Bolt, Lock Washer and Flat Washer up through the bottom of the bumper and thread into the Pivot Pin. This will lock the pivot pin in place. You do not have to overtighten the ½”-13 Bolt... Tighten just enough so that the Tire Carrier still opens and closes smoothly.

Step 6 – Install the other Rod End Fitting onto the Tire Carrier & tighten. (Fig. 3)

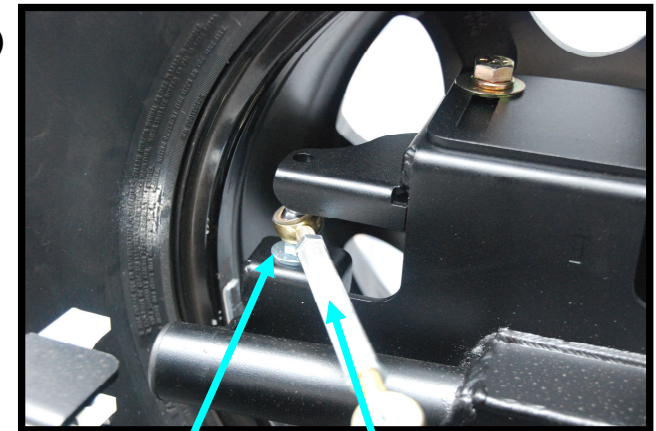
Step 7 – Now Install the 3 Wheel Studs into the Slide Adjustable Tire Mount. Make sure you place wheel studs in the correct holes for your wheel bolt pattern. You can use either a mechanical press, hammer or bench vise to install the wheel studs. Install the Slide Adjustable Tire Mount to Tire Carrier using the four supplied ½”-13 x 1-1/2” Gr 8 Hex Head Bolts, Lock Washers and Flat Washers.

#### **DO NOT TIGHTEN BOLTS YET.**

Install your spare tire. With the tire installed you can now adjust the sliding mount to the best position for your size tire. Once the position is set, Tighten all four bolts. Note: Tire should be tight against swingout base arm. This will help to keep the tire from vibrating.

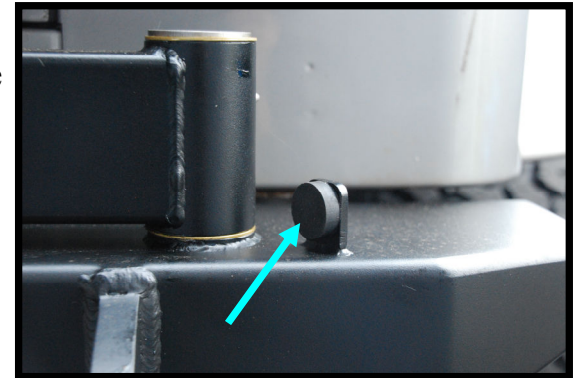
Step 8 – Install the black rubber stem bumper onto plate on bumper. Work into hole By twisting and pushing. (See Figure 4 For Location)

Figure 3



Rod End Fitting & Connector Rod..  
Install on lower mounting point. Upper  
mounting point is used if vehicle has a  
body lift up to 2”.

**Figure 4**



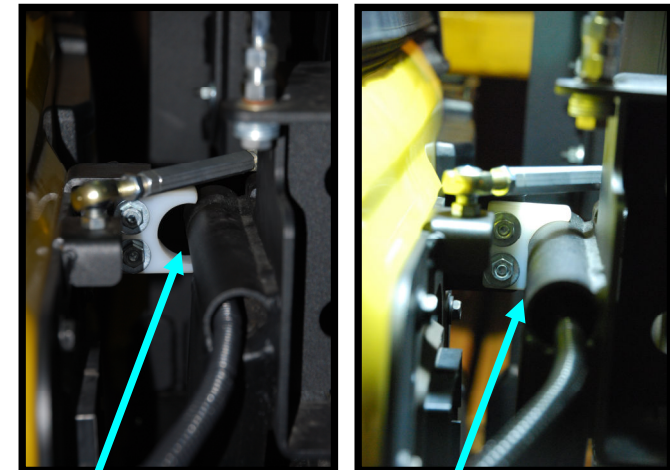
Step 8 – Install the 3/8”-24 Thin Hex Nuts onto each Rod End Fitting & Assemble the Aluminum Connector Rod to End Fittings. Note, the connector rod and end fittings are machined with right and left hand threads. They can only be assembled one way. Just start the threads into the connector rod in this step. (See Figure 3)

Step 9 – With the tailgate in the closed and latched position, you can turn/tighten the connector rod until the Tire Carrier draws in tight to the plastic alignment block. You can adjust the alignment block up or down in order for it to align with the round tube on the Tire Carrier. (See Figure 5 For Proper Tightening)

**Figure 5**

Step 10 – Tighten 5/16” bolts in Alignment Block & tighten 3/8” thin hex nuts against the connector rod. This will keep the connector rod from unthreading over time. You can also tighten the three Tailgate Bracket bolts.

Step 11 – Use a Grease Gun with quality White Lithium Grease sold at almost any automotive or hardware store. While pumping in grease, continually rotate the tire carrier as far closed and open as possible. This will help spread the grease evenly throughout the Pivot Pin. From time to time you will need to re-grease the Pivot Pin. Doing so will prolong the life of your tire carrier.



*Incorrect Adjustment*  
Connector Rod Should  
Be Tightened

*Correct Adjustment*  
Tightly Seated With  
Alignment Block

**\*\*\*After Driving a couple days, Check All Bolts and Connections  
Re-tighten As Necessary\*\*\***

Send your OFFROAD pictures to [pics@HylineOffroad.com](mailto:pics@HylineOffroad.com) . If we choose any one of your pictures to be used on our website, We send you a FREE Hyline Offroad T-Shirt.